



**LIFE** Population level management and  
**DINALP** conservation of brown bears in northern  
**BEAR** Dinaric Mountains and the Alps



LIFE13 NAT/SI/000550

## **PROPER USE AND OPERATION OF THE BEAR-PROOF GARBAGE CANS AND COMPOST BINS IN THE MUNICIPALITY OF LOŠKA DOLINA – TECHNICAL REPORT**

***Action C.1: Conflict mitigation in the hot-spot areas – organic waste***

**August, 2018**



ZAVOD za GOZDOVE  
SLOVENIJE  
Slovenia Forest Service

Univerza v Ljubljani





**Prepared by:**

Vesna Oražem, Matija Stergar

## 1. Introduction

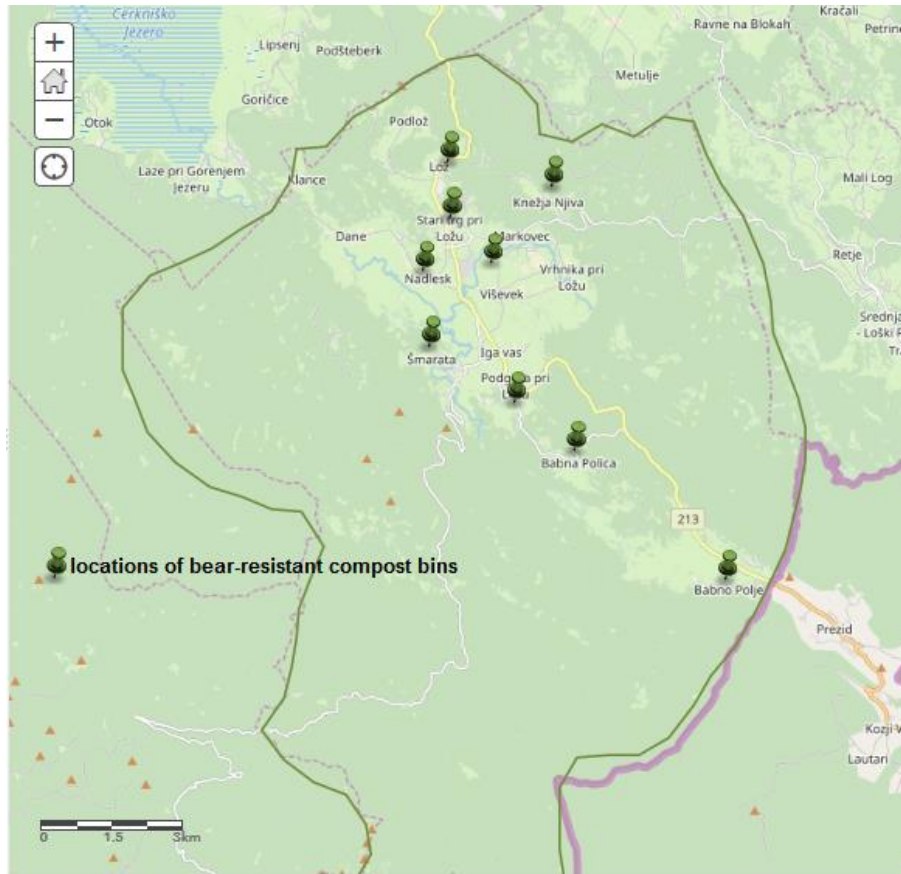
In the municipality of Loška dolina (see map 1) bears often come to the nearest vicinity of the settlements. One of the most attractive is the area at the eastern part of the city Stari trg pri Ložu, named Ograde. This settlement is surrounded by forested area. The most numerous conflict situation occurs in the street in the immediate vicinity of the forest. For that reason, in this area we installed the bear-proof individual garbage cans. The implementation of the measure was carried out in close cooperation with the municipality of Loška dolina.



**Map 1:** Location of the municipality of Loška dolina in Slovenia (in green).

## 2. Description of implemented measures on the »hot-spot«

In this “hot-spot” both prevention measures, garbage cans and compost bins, were distributed (see map 2). Individual garbage cans and also compost bins were distributed in settlement Ograde (see map 3). All of the households in the upper street, which is in the immediate vicinity of the forest, received their individual “bear-proof” garbage can. The recipient who compost their organic waste, received also the “bear-proof” compost bin. Even if in the distribution plan only distribution of the compost bin was foreseen, all of the inhabitants of Ograde do not compost their organic waste. Therefore, we distributed the compost bins also to other parts of the municipalities, from which we also got lots of enquiries. Therefore, besides in Ograde, the compost bins were distributed also in settlements Babno polje, Babna polica, Vrh, Nadlesk, Šmarata, Pod gradom, Smelijevo naselje, Knežja njiva and Dolenje Poljane.



**Map 2:** Locations of the bear-proof compost bins.



**Map 3:** Ograde, the area where the individual garbage cans and compost bins were distributed.

### 3. State of implemented measures on different locations

#### 3.1 Bear-proof garbage cans

Individual “bear-proof” garbage cans (figure 1 and 2) were distributed among inhabitants of the settlement Ograde, who live in the street next to the forest. During our control visits we noticed flawless operation of the garbage cans. During our visits, the recipients reported that bears sometimes overturn

the garbage cans but do not succeed in opening it. Because they do not access the contents of the garbage cans, in general they are not interested in overturning it anymore. For us, this is an additional approval that implemented measure effectively deterrent bears from human settlements.



**Figure 1 and 2:** Individual »bear-proof« garbage cans for mixed municipal waste collection. All of the garbage cans are equipped with a sticker with LIFE and NATURA 2000 logotype and LIFE DINALP BEAR project acronym, to provide information about their “bear-proofness”.

### 3.2 Bear-proof compost bins

Because of very dispersed distribution of the compost bins in area of Loška dolina. The state of the prevention measure is described and discussed altogether. The general operation of the compost bins is flawless (figures 3-6).





Figure 3-6: good operation of the »bear-proof« compost bins.

During our control visits we only noticed some smaller irregularities:

- a) **technical irregularity:** with irregular maintenance, during the winter-time, the cover lid become rusted.
- b) **inconsistent use:** in one case, the compost bin was not anchored correctly.

In the case of the cover lid rusting, no special intervention was needed, because the owners solved the problem by their own, based on our advice. Now all of the compost bin owners are taking care of the cover lid and maintain it in appropriate condition. One of the recipients did not anchored the compost bin correctly. We informed him about the importance of anchoring to prevent overturning by bears in addition. Afterwards, he solved the irregularity and also fixed the compost bin to the concrete slab additionally.

#### 4. Overall measures condition and implications for further usage

##### 4.1 Bear-proof garbage cans

Good operation and proper use of the implemented measure ensured the prevention of bears accessing the garbage cans contains, when overturning it. Because they could not access the food, they were not rewarded and therefore show no more interest in overturning the garbage cans. For our project action this case is a confirmation of our hard work and good communication with all of the stakeholders, municipality of Loška dolina, competent communal community in this area, and all the recipients of the individual “bear-proof” garbage cans. For the purpose of further informing the locals about the importance of the correct and consistent use of enclosures, we will also organize a lecture/workshop on this subject, where all examples of good practices will be highlighted.

##### 4.2 Bear-proof compost bins

During our control visits, we did not notice major irregularities in operation and also in use of the “bear-proof” compost bins. Proactive behavior of and proposing solutions by the owners and in one case incorrect anchoring, are a reflection of our well-established communications and relationships with the stakeholders. In addition to the individual advising the owners, we will organize lecture/workshop to raise awareness in a wider circle of local inhabitants.