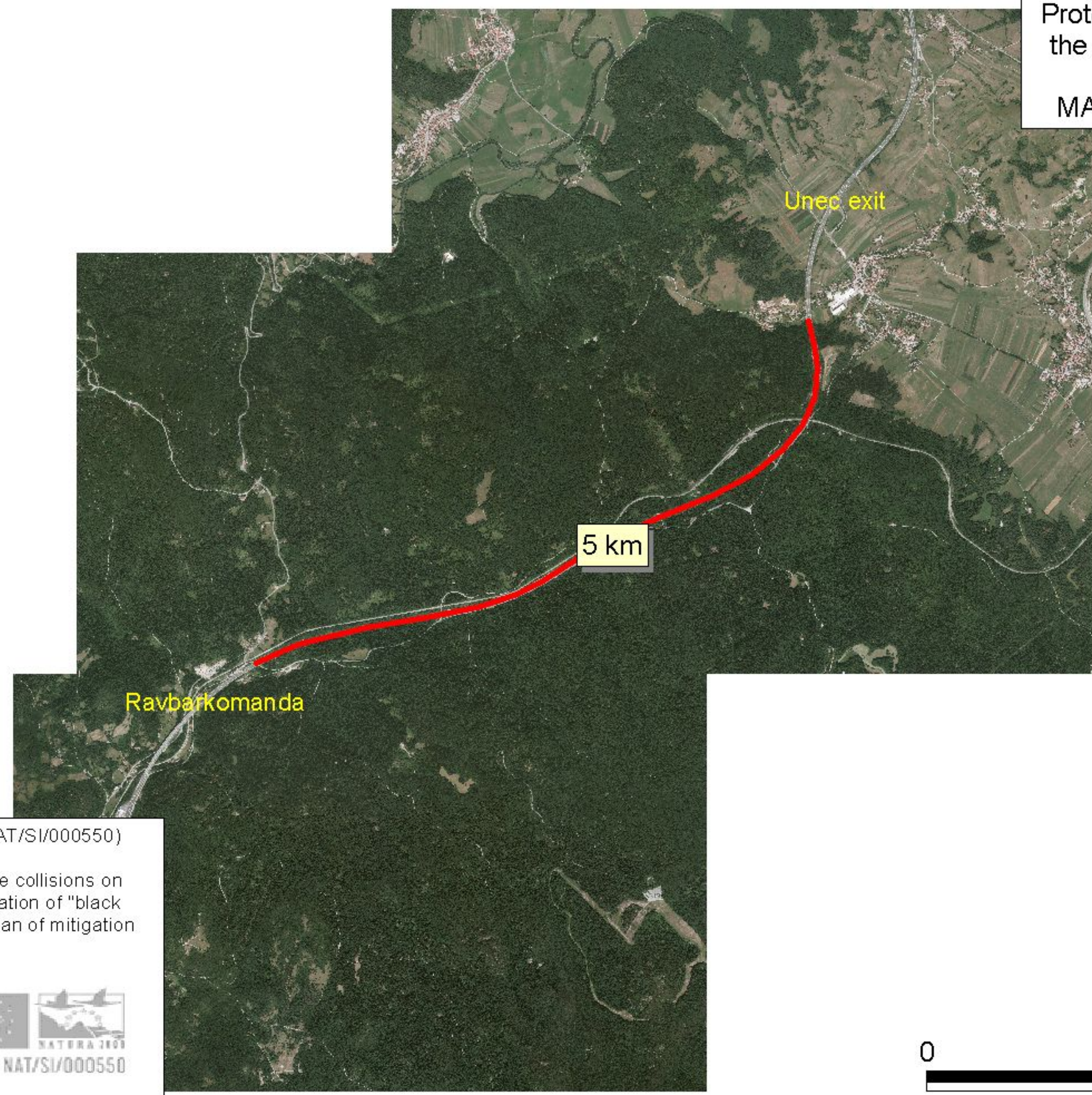


Protected section along
the highway (Slovenia)
MAP 1: Black spot 11

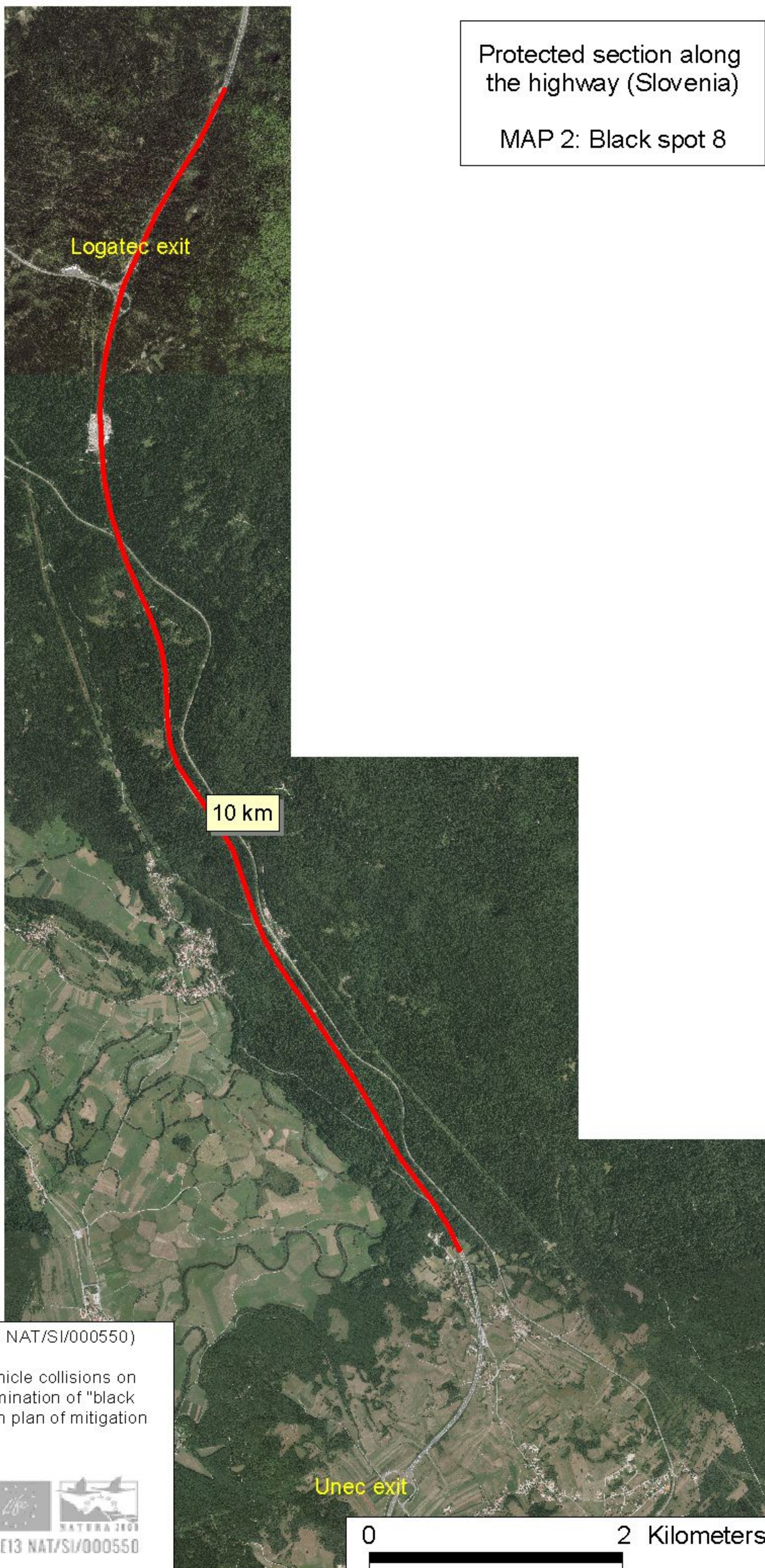


LIFE DINALP BEAR (LIFE13 NAT/SI/000550)
Action A.4: Impact of bear-vehicle collisions on
brown bear population, determination of "black
spots" and preparation of action plan of mitigation
measures



Protected section along
the highway (Slovenia)

MAP 2: Black spot 8



LIFE DINALP BEAR (LIFE13 NAT/SI/000550)

Action A.4: Impact of bear-vehicle collisions on
brown bear population, determination of "black
spots" and preparation of action plan of mitigation
measures



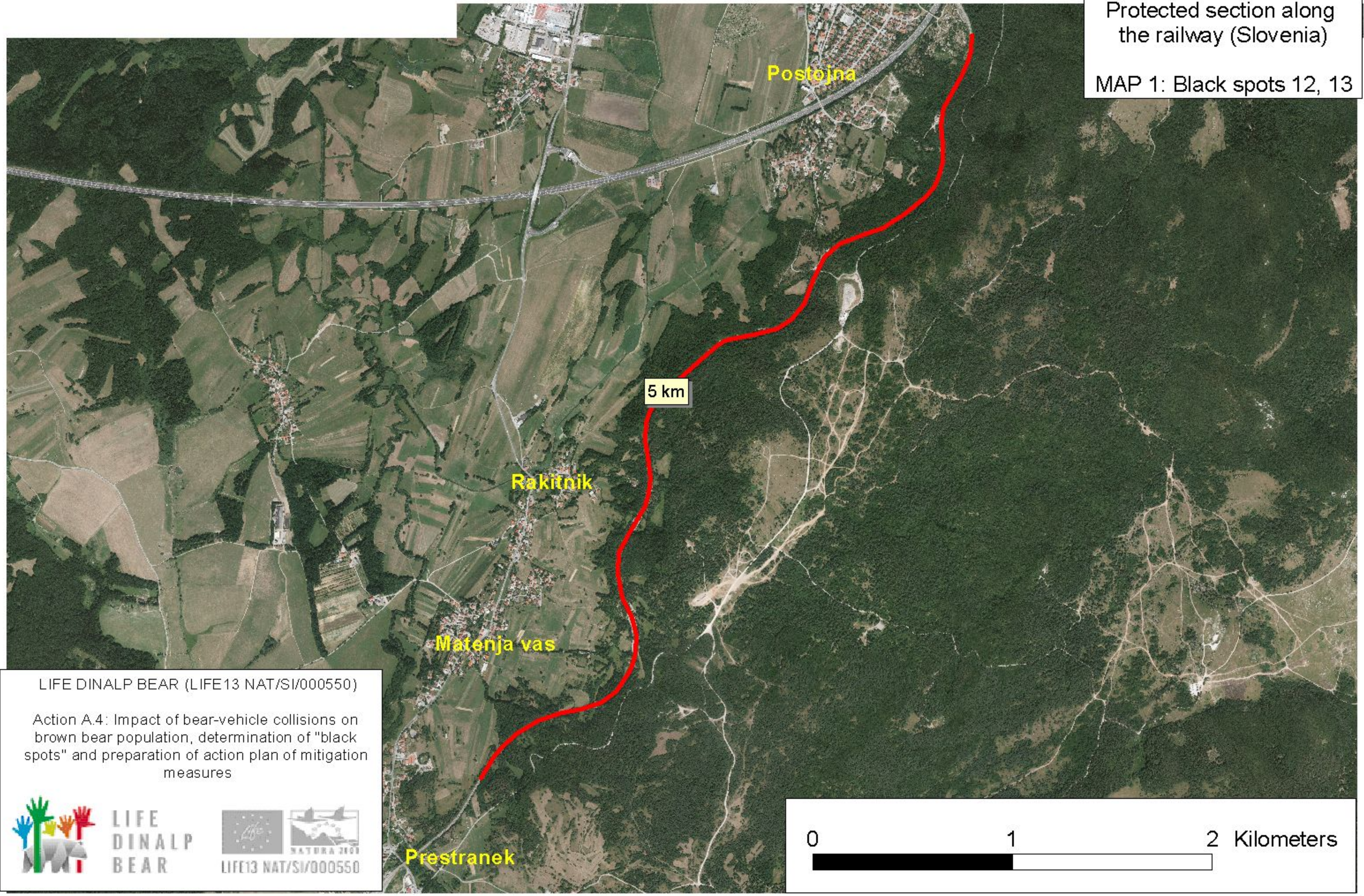
LIFE
DINALP
BEAR



0

2 Kilometers





Protected section along the railway (Slovenia)
MAP 1: Black spots 12, 13

LIFE DINALP BEAR (LIFE13 NAT/SI/000550)
Action A.4: Impact of bear-vehicle collisions on brown bear population, determination of "black spots" and preparation of action plan of mitigation measures



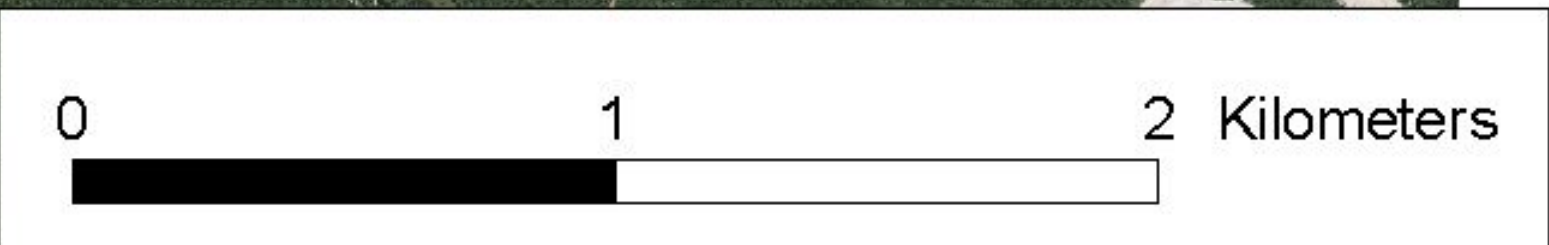
Protected section along
the railway (Slovenia)
MAP 2: Black spot 10



LIFE DINALP BEAR (LIFE13 NAT/SI/000550)
Action A.4: Impact of bear-vehicle collisions on
brown bear population, determination of "black
spots" and preparation of action plan of mitigation
measures

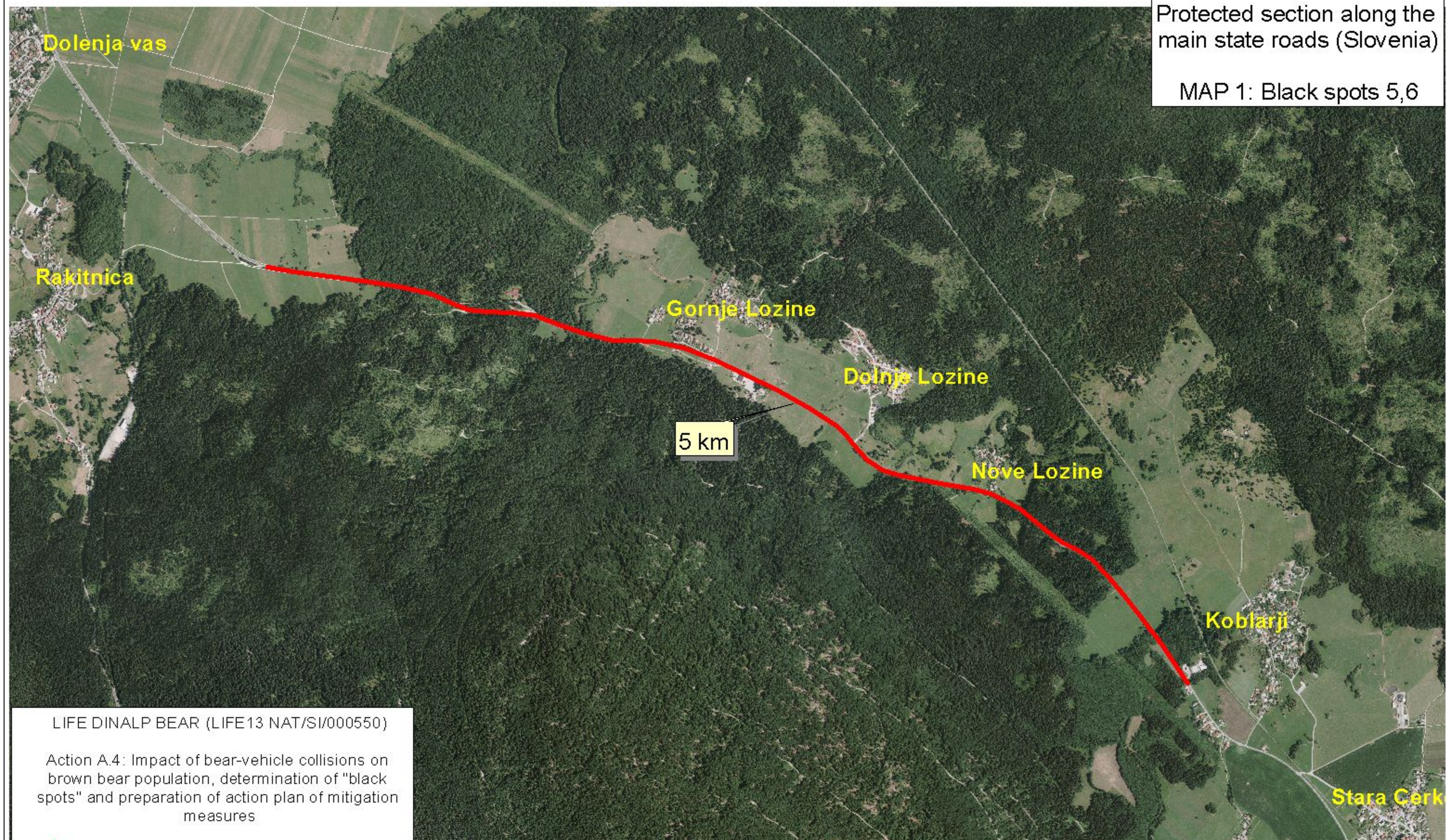


LIFE
DINALP
BEAR



Protected section along the
main state roads (Slovenia)

MAP 1: Black spots 5,6



LIFE DINALP BEAR (LIFE13 NAT/SI/000550)

Action A.4: Impact of bear-vehicle collisions on
brown bear population, determination of "black
spots" and preparation of action plan of mitigation
measures

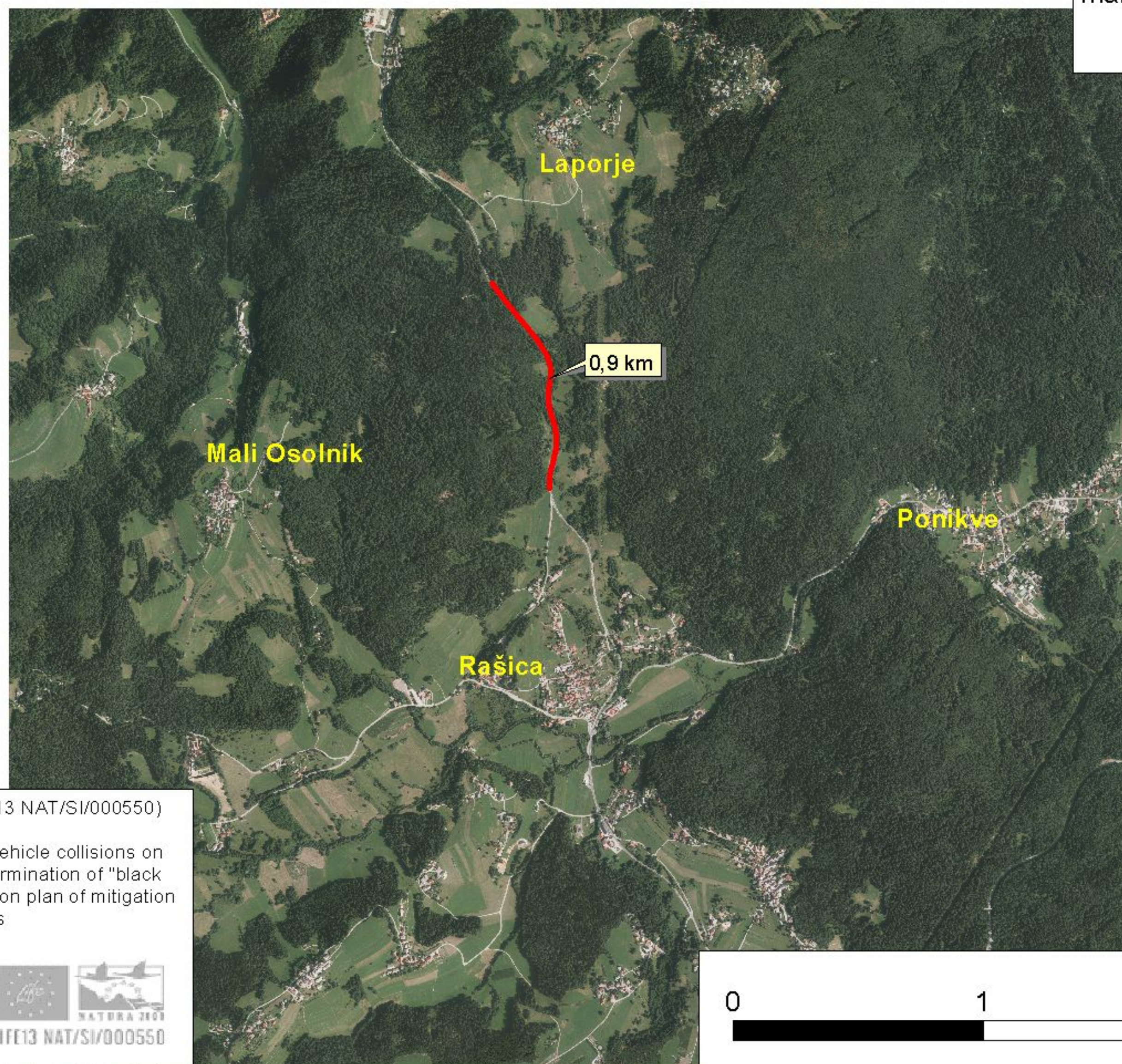


LIFE
DINALP
BEAR



Protected section along the
main state roads (Slovenia)

MAP 2: Black spot 1



LIFE DINALP BEAR (LIFE13 NAT/SI/000550)

Action A.4: Impact of bear-vehicle collisions on
brown bear population, determination of "black
spots" and preparation of action plan of mitigation
measures



LIFE
DINALP
BEAR



0 1 2 Kilometers